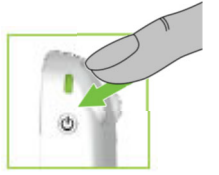


ROGER TOUCHSCREEN CHEAT SHEET

Getting Started

Turn On

Press and hold on/off button for at least 3 seconds until you get green flashing light on device.

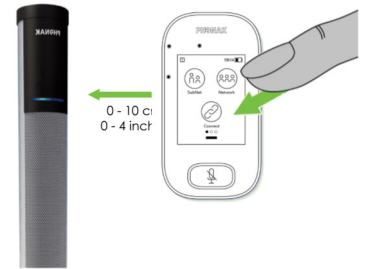


Connect to Soundfield Speaker

Turn the Soundfield On using the switch at the bottom of the speaker and the flashing Blue light will be on.

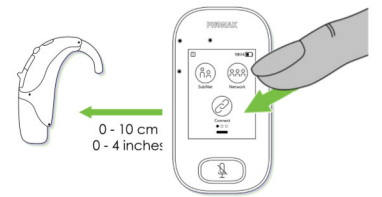
Hold the Touchscreen within 5 cm of the Soundfield Speaker. Press Connect on the front screen of the Touchscreen.

The Soundfield light will be solid blue when connected.



Connect to Hearing Aid Receiver / MyLink (if required)

Press the link/connect button and hold within 5 cm to either the In-built Roger X receiver or MyLink. Student will hear beep upon connection.



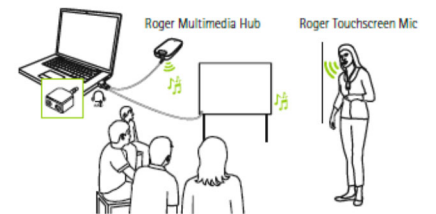
Begin Teaching / Talking

Begin talking. Press the Mute button as required. The touchscreen button will be red and the Soundfield light will be green when muted.



(Option) Connect to Device

Connect the Touchscreen to any device including laptop, iPad or computer using the 3.5 audio cable plugged into the headphone jack.

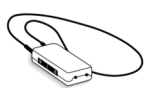


Recommended Compatible Devices

1. Roger device must be turned on to connect
2. Hold Roger Touchscreen Mic within 5 cm
3. Tap **connect** to add device network
4. Message will appear on screen to confirm connection.



Roger MyLink



Roger X Receiver



Roger Media Hub



Roger Pass-Around Mic



Roger Wall Pilot



Tips:

- Refer User guide / cheat sheet for device specific information
- Wall Pilots should be connected prior to other devices as they may reset existing connections. Refer Wall Pilot Cheat Sheet.
- When connecting to a telephone or digital TV, an adaptor may be required. Refer to Troubleshooting guides or contact phone support for advice.
- Touchscreen must be upright for microphone & pass-around use. Lay flat for group mode only.

Troubleshooting Tools!

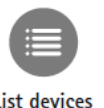
Touchscreen Menu's

Swipe screen left or right to select Touchscreen Menu's



List Devices

Lists Connected Devices that are in connection range. i.e. 5cm. Connections will remain if powered off until "New Net" is selected. Use "List Devices" to check connections.



List devices

1. Locate "List Devices" icon

2. Tap NewNet

Time to list devices may vary. Model & Serial numbers will be listed.

Reset Connections—Create NewNet

Erases the microphone's current network (including SubNets). All required devices, e.g. receivers and additional microphones, will need reconnecting.



NewNet

1. Locate "NewNet" icon

2. Tap NewNet

3. Tap Yes to confirm

Non Hearing Aid users can use Soundfields & MyLinks with Headphones to listen and the adjust settings.



Roger™ Better hearing for everyone

www.hearingloop.com.au

info@hearingloop.com.au

1300 669 721

Touchscreen Cheat Sheet 190319/V1.1