



# Teacher Microphone & Soundfield Speaker Kit User Information

Last Updated: 16/09/2020 11:33:00 AM



[www.hearingloop.com.au](http://www.hearingloop.com.au)  
[info@hearingloop.com.au](mailto:info@hearingloop.com.au)  
1300 669 721

Soundfield Kit Contents .....	2
Basic Kit Contents .....	2
Learning Assistance Package Inclusions.....	2
Education Solutions .....	3
Hearing Augmentation in Australia.....	4
Roger Touchscreen Cheat Sheet.....	5
How to use a Roger Receiver .....	6
Connecting to a Laptop.....	7
Video Conferencing at Home.....	8



# SOUNDFIELD KIT CONTENTS

## BASIC KIT CONTENTS



Digi Master Soundfield Speaker (5000 or 7000)

- *Includes power supply*
- *Incudes Tripod Stand or Wall Mount*



Roger Touchscreen

- *Includes USB Charging plug and cable*
- *Includes Audio Cable*

## LEARNING ASSISTANCE PACKAGE INCLUSIONS



Roger Pass-Around Microphone

- *Includes USB Charging plug and cable*
- *Includes Hands Free Stand*



Roger Media Hub

- *Includes USB Charging plug and cable*
- *Includes Audio Cable and Splitter*



Roger Media Hub

- *Includes USB Charging plug and cable*
- *Includes Audio Cable and Splitter*



HLA Perspex Box

- *Includes Lock and Key*



**Hearing Loop Australia**  
*Keeping your audience in the loop*

[www.hearingloop.com.au](http://www.hearingloop.com.au)  
[info@hearingloop.com.au](mailto:info@hearingloop.com.au)  
1300 669 721

# EDUCATION / TRAINING SOLUTIONS



Soundfields help achieve the best possible learning experience for children to hear the teacher's voice clearly in class.

- Improved sentence recognition ability
- Increased attention, interaction and participation
- Quicker acquisition of reading, writing & numeracy skills
- Reduced teacher vocal strain
- Improved classroom management

## Basic Soundfield Package

- 1 x Roger Touchscreen Mic (#052-3297)
- 1 x Roger DigiMaster 5000 \*\*

## Learning Assistance Soundfield Package

- 1 x Roger Touchscreen Mic
- 1 x Roger DigiMaster 5000 \*\*
- 1 x Roger Pass-Around
- 1 x Roger Media Hub
- 1 x Roger Charging Rack
- 1 x Perspex Box



\*\* comes with floor stand, wall mount available

Recommended Applications:  
Classrooms, Libraries, Meeting Rooms & Open Learning Spaces

## DigiMaster 5000 Soundfield Speaker #052-3195

Delivering exceptional sound quality with the capability to produce crystal clear voices throughout a room, while reducing voice strain, distractions, background noise and feedback.

## Roger Touchscreen Transmitter #052-3297



This easy to use microphone transmits the speaker's voice and audio feeds, whilst reducing background noise, to the Soundfield speakers and directly to hearing impaired children's Roger receivers & hearing aids with MyLinks connected to enabled Telecoils.

- 3 intuitive directional microphones,
- 3.5mm audio input,
- Secure & private system,
- 2.4Ghz wireless transmission,
- 20 meters + range.

## Roger Pass-Around #052-3261



The Roger Pass-around is designed to enhance classroom discussions so that not only teachers, but all students are heard clearly. The Roger Pass-around can be handed from one person to another or placed in the sturdy stand in front of one or two students.

## Roger Media Hub #052-3299



In the modern classroom, teachers' lessons are often supported by video and audio sources such as interactive whiteboards or MP3 players. Children listen to individual lessons like an audiobook or computer assignment. The Roger Multimedia Hub can be used to support both mixed (teacher and audio) and individual listening.

## Perspex Box & Charging Rack



Our custom made box and lock provides secure, charging and storage for a range of devices to reduce loss and theft.

**PROUDLY SUPPORTING TEACHERS & STUDENTS**  
**ASK US ABOUT FREE TRAINING & SUPPORT SERVICES!**



**Hearing Loop Australia**  
Keeping your audience in the loop

www.hearingloop.com.au  
info@hearingloop.com.au  
1300 669 721

# HEARING AUGMENTATION IN AUSTRALIA

## Children's Assistive Hearing Equipment



Hearing Australia, the sole provider of services for Community Service Obliga. on (CSO) funding that can be accessed by children and young adults under the age of 26, Indigenous adults over 50 and adults with complex hearing needs.

Hearing Australia's services include: assessing hearing, selecting and fitting hearing devices, training to improve listening and communication, providing counselling and rehabilitative programs. (<https://www.hearing.com.au/Our-services/Our-services-to-you>).

### Ear-Level Technology

Roger™ Focus	Hearing Aid with Roger™ X (02) Receiver	Cochlear Implant with Mini Mic 2 Processor & Roger™ Receiver	Hearing Aid with T- Switch (Not activated unless requested)
Roger™ Focus, Receiver only. No ambient sound amplification. Used to help learning, where a child experiences other learning / auditory difficulties.	Most commonly issued to aid children, adults with a DVA gold card and adults with complex hearing difficulties. Telecoil not required.	Cochlear Implant with integrated Roger Receiver or Mini Mic 2 with Roger X, for hearing impaired users with significant hearing impairment.	Commonly issued to adults. T-Switch is optional.

### Hearing Augmentation & Transmitters to Ear-Level Technology

Hearing Augmentation is the process of transmitting sound directly to a hearing aid. Hearing Augmentation is required by the Building Code BCA D3.7 in class 9b buildings with amplified sound. Of the generally accepted methods listed in AS1428.5, Roger wireless 2.4 ghtz and T-Switch (telecoil) connectivity are most commonly used in Australia. Users with alternative requirements can use headphones.



### Roger Transmitters

Using a wireless transmitter provides direct sound that has low noise interference helping to maintain the quality and clarity of the sound transmitted. Roger™ transmitters wirelessly transmit to compatible devices including:

Roger Hearing Aids with inbuilt receivers	Children and adults
Hearing Aids with Roger Receivers	Children and adults
Roger MyLink (02)	For use with T-Switch
Roger X (02) or Integrated receivers	Use with Implants, Hearing Device Streamers and Audio Shoes



Using a Touchscreen Microphone transmits voice and improves communication, ideal for a classroom or meeting room. Media Hubs transmit connected audio content from a secondary audio device, e.g.: PA system television, interactive panel, projector or personal computer.

### Telecoil Connectivity

Hearing Aids with T-switches access a Roger System using a Roger™ MyLink. Headphones are optional for hearing aids without a T-switch.



**Hearing Loop Australia**  
Keeping your audience in the loop

[www.hearingloop.com.au](http://www.hearingloop.com.au)  
[info@hearingloop.com.au](mailto:info@hearingloop.com.au)  
1300 669 721

# ROGER TOUCHSCREEN CHEAT SHEET

## Getting Started

### Turn On

Press and hold on/off button for at least 3 seconds until you get green flashing light on device.



### Connect to Soundfield Speaker

Turn the Soundfield On using the switch at the bottom of the speaker and the flashing Blue light will be on.

Hold the Touchscreen within 5 cm of the Soundfield Speaker. Press Connect on the front screen of the Touchscreen.

The Soundfield light will be solid blue when connected.



### Connect to Hearing Aid Receiver / MyLink (if required)

Press the link/connect button and hold within 5 cm to either the In-built Roger X receiver or MyLink. Student will hear beep upon connection.



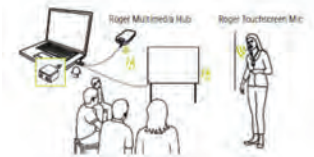
### Begin Teaching / Talking

Begin talking. Press the Mute button as required. The touchscreen button will be red and the Soundfield light will be green when muted.



### (Option) Connect to Device

Connect the Touchscreen to any device including laptop, iPad or computer using the 3.5 audio cable plugged into the headphone jack.



## Recommended Compatible Devices

1. Roger device must be turned on to connect
2. Hold Roger Touchscreen Mic within 5 cm
3. Tap **connect** to add device network
4. Message will appear on screen to confirm connection.



Connect

Roger MyLink



Roger X Receiver



Roger Media Hub



Roger Pass-Around Mic



Roger Wall Pilot



### Tips:

- Refer User guide / cheat sheet for device specific information
- Wall Pilots should be connected prior to other devices as they may reset existing connections. Refer Wall Pilot Cheat Sheet.
- When connecting to a telephone or digital TV, an adaptor may be required. Refer to Troubleshooting guides or contact phone support for advice.
- Touchscreen must be upright for microphone & pass-around use. Lay flat for group mode only.

## Troubleshooting Tools!

### Touchscreen Menu's

Swipe screen left or right to select Touchscreen Menu's



### List Devices

Lists Connected Devices that are in connection range, i.e. 5cm. Connections will remain if powered off until "New Net" is selected. Use "List Devices" to check connections.



List devices

1. Locate "List Devices" icon
2. Tap NewNet

Time to list devices may vary. Model & Serial numbers will be listed.

### Reset Connections—Create NewNet

Erases the microphone's current network (including SubNets). All required devices, e.g. receivers and additional microphones, will need reconnecting.



NewNet

1. Locate "NewNet" icon
2. Tap NewNet
3. Tap Yes to confirm

*Non Hearing Aid users can use Soundfields & MyLinks with Headphones to listen and the adjust settings.*

## HOW TO USE ROGER™ RECEIVER

Your hearing system consists of three main elements: Roger MyLink, your hearing aids and a Roger transmitter, such as Roger Touchscreen or Roger Media Hub. The Roger microphone transmits the audio or speaker's voice wirelessly to your hearing aids via the Roger MyLink. You only need to activate the T-Coil in your hearing aid(s) to hear the speaker's voice loud and clear in your ear(s).

PLEASE SEE ROGER TOUCHSCREEN CHEAT SHEET  
OR ROGER MEDIA HUB CHEAT SHEET FOR  
INSTRUCTIONS ON CONNECTING / USING THE  
TRANSMITTER



### Roger MyLink (02) - Use with T-Switch / Telecoil

- ① Charging socket
- ② Headphone socket (2.5 mm)



- ① Volume control
- ② On/off



1. For hearing devices fitted with telecoil - put neck loop around your neck. It can be tucked underneath clothing.
2. Switch receiver MyLink **ON** with the Green side visible.
3. Switch hearing device to "telecoil" mode.
4. Adjust loudness on Roger™ receiver & hearing devices to desired volume.

### Roger MyLink (02) - Use with Headphones



1. For hearing devices fitted with telecoil - put neck loop around your neck.
2. Switch MyLink receiver **ON**.
3. Connect headphones to bottom of receiver and adjust loudness to desired volume.

Please return the receiver and attachments at the end of the program.  
**PLEASE!** Do not leave equipment unattended on your seat.



**Hearing Loop Australia**  
Keeping your audience in the loop

www.hearingloop.com.au  
info@hearingloop.com.au  
1300 669 721

# CONNECTING TO LAPTOP

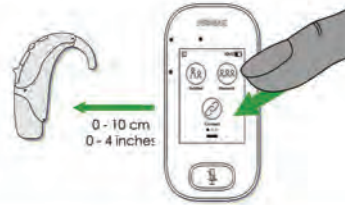
## CONNECTING TO A ROGER™ TOUCHSCREEN

### 1. Turn Touchscreen On

Press and hold on/off button for at least 3 seconds until you get a green flashing light .



### 2. Connect Touchscreen to your Hearing Aid Receiver / MyLink

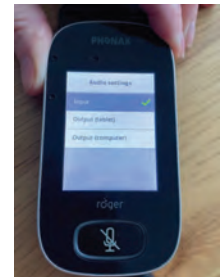
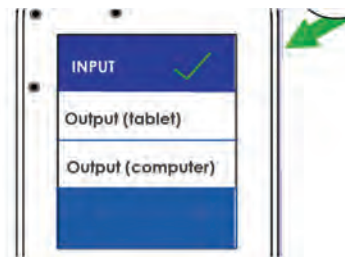


### 3. Connect to Touchscreen

a) Connect 3.5mm audio cable to the round audio jack at the bottom of the Touchscreen.



b) The Audio Setting Screen will appear automatically. Ensure that "Input" is selected on Touchscreen



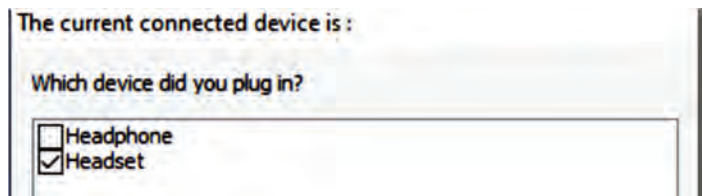
### 4. Plug In to Device

Plus in the other end of the cable to the headphone audio jack on your laptop



### 5. Select "OK" (if required)

Ensure headset. Is selected  
(This may differ depending on your device and system set up.)



If you have continuing difficulties in obtaining Audio and Microphone access when using the TSM, unplug all devices, switch off your computer, and restart. Then follow instructions exactly as shown, starting from Step #1 again

Thanks to NWWV Visiting Teacher Service (Hearing) for their feedback and support in producing this document.





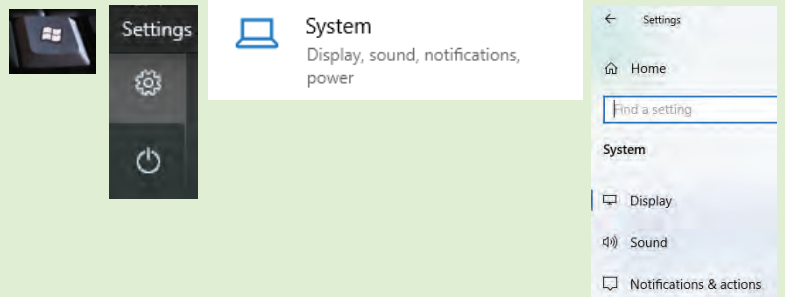
# VIDEO CONFERENCING AT HOME

Every device and App is different. These are some standard settings.

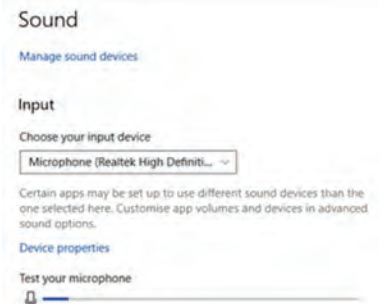
Seek help from your Visiting Teacher, Audio Technician or IT Consultant for tailored support.

## LAPTOP SETTINGS

- Go to the Sound Settings on your device by following these steps:
  - Start (or press windows key on keyboard)
  - Select "Settings"
  - Select "System"
  - Select "Sound".



- Microphone (Input)**  
Talk to your device. If the microphone is working the blue line will move

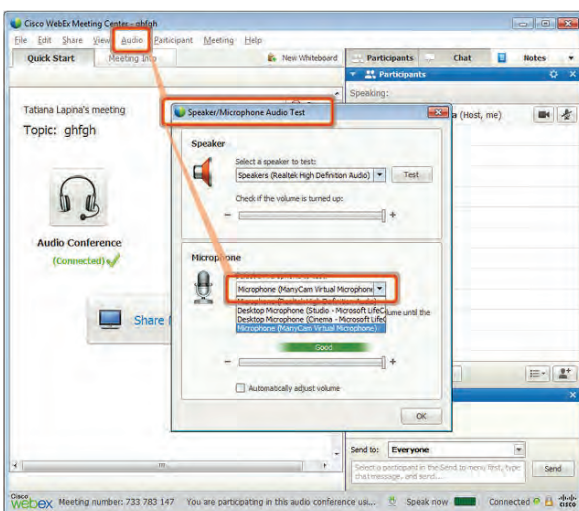


- Sound (Output)**  
Play a sound using the internet (YouTube or similar). You should be able to hear it in your hearing aid.



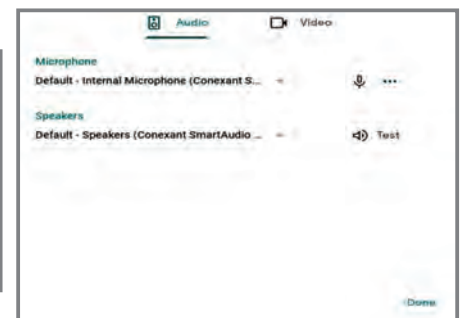
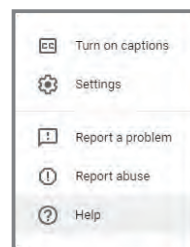
## VIDEO CONFERENCE SETTINGS

### WEBEX



### Google Meet

- Click on 3 dots (Bottom right of Google Meet screen)
- Select "Settings"
- Ensure Default Speakers are selected
- Click "Done"





IPT

Installation Pack (Teacher)

10/12/2020