

ROGER TOUCHSCREEN CHEAT SHEET

USING A ROGER TOUCHSCREEN MICROPHONE WITH A SOUNDFIELD OR HEARING AID

1. Turn On Touchscreen

Press and hold power button for at least 3 seconds until you get green flashing light on device.

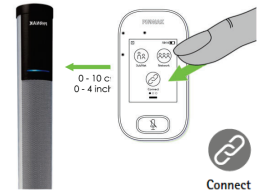


2. Connect Touchscreen Microphone to Output Devices

2.1 Soundfield 5000 or 7000 Speaker

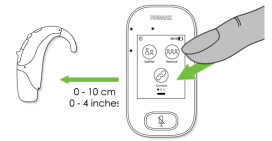
Turn the Soundfield On, using the switch at the bottom of the speaker; the light will flash blue.

Hold the Touchscreen within 5cm of the Soundfield Speaker. Press "Connect" on the front screen. The Soundfield light will be solid blue when connected.



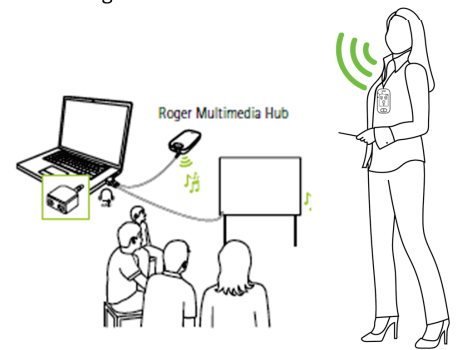
2.2 Connect to Hearing Aid Receiver / Neckloop

Press the link/connect button and hold within 5cm to either the In-built Roger Receiver, Roger X Receiver or Roger Neckloop. Students will hear beep upon connection.



3. Begin Teaching / Talking

Connect Touchscreen to lanyard and place around the neck and shorten by pulling the strap so device is within 20cm of mouth. Begin talking. Press the Mute button as required. The light will be red and the Soundfield light will be green when muted.



CONNECTIONS CAN BE DIRECT WITH ROGER COMPATIBLE HEARING AIDS OR RECEIVERS.

USERS WITH T-SWITCHES WILL REQUIRE A ROGER NECKLOOP (OR ROGER MYLINK).

REFER TO "[HOW TO USE ROGER NECKLOOP RECEIVER](#)".

Troubleshooting Tools!

Touchscreen Menu's

Swipe screen left or right to select Touchscreen Menu's

List Devices

Lists Connected Devices that are in connection range, i.e. 5cm. Connections will remain if powered off until "New Net" is selected or devices are connected to a different device. *Time to list devices may vary. Model & Serial numbers will be listed.*



Reset Connections

Erases the microphone's current network (including SubNets).

1. Select "NewNet" icon
2. Select "Yes" to confirm
3. **All required devices, e.g. receivers and additional microphones, will need reconnecting.**



List devices



NewNet

Non Hearing Aid users can use Soundfields & Neckloops with Headphones to listen and the adjust settings.

Tips:

- Refer User guide / cheat sheet for device specific information
- When connecting to a telephone or digital TV, an adaptor may be required. Refer to Troubleshooting guides or contact phone support for advice.
- **Touchscreen must be upright for microphone & pass-around use. Lay flat for group mode only.**

Please see www.hearingloop.com.au/supportdocs for further information



Roger TM Better hearing for everyone

www.hearingloop.com.au

info@hearingloop.com.au

1300 669 721

Touchscreen Cheat Sheet 190319/V1.1